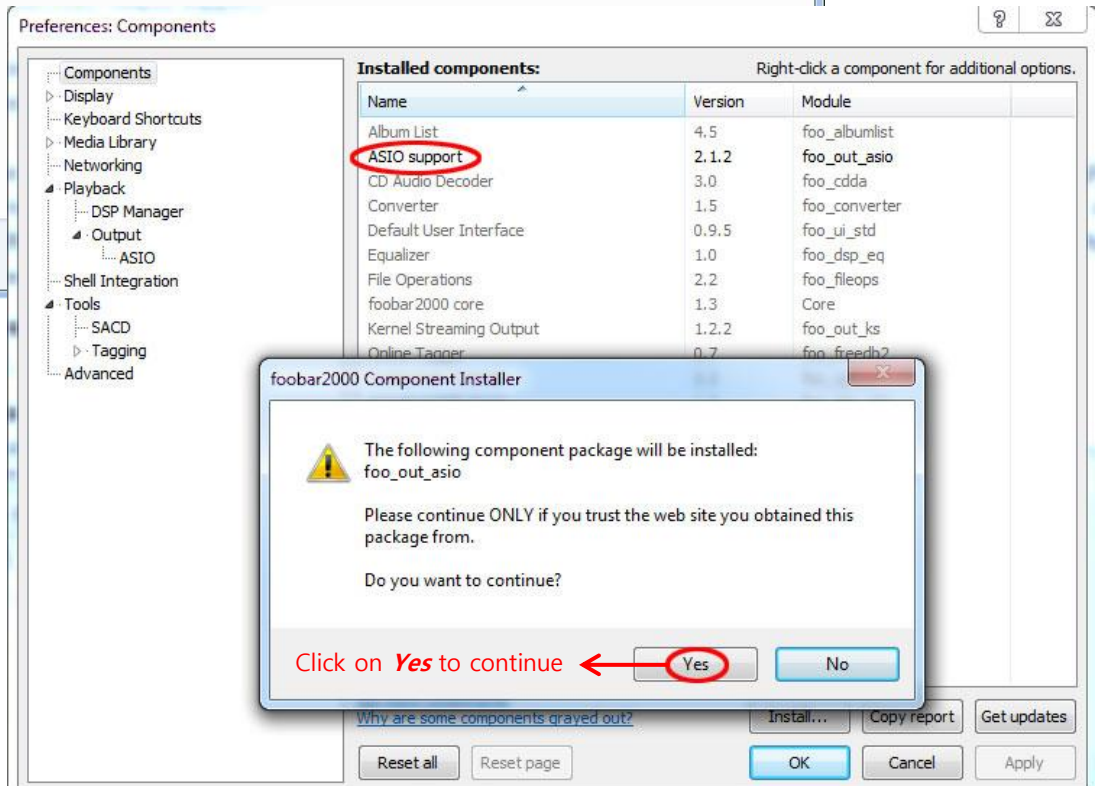
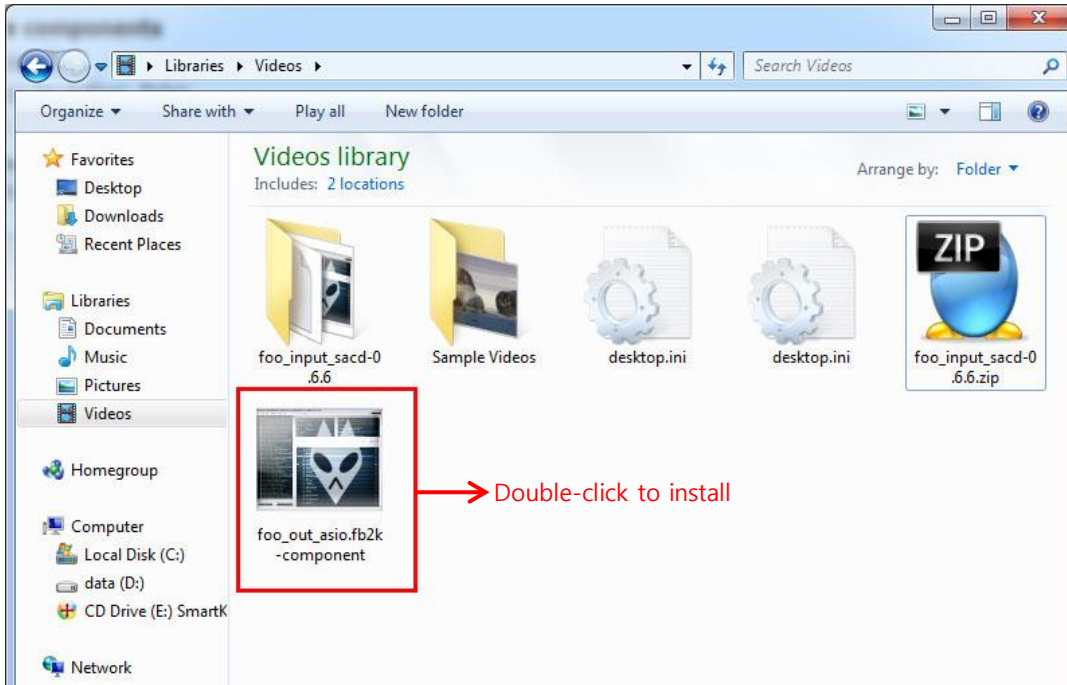


1. Installation of Foobar program

Visit Foobar website and visit the player: <http://www.foobar2000.org>

2. After installing the Foobar, download and install the ASIO component

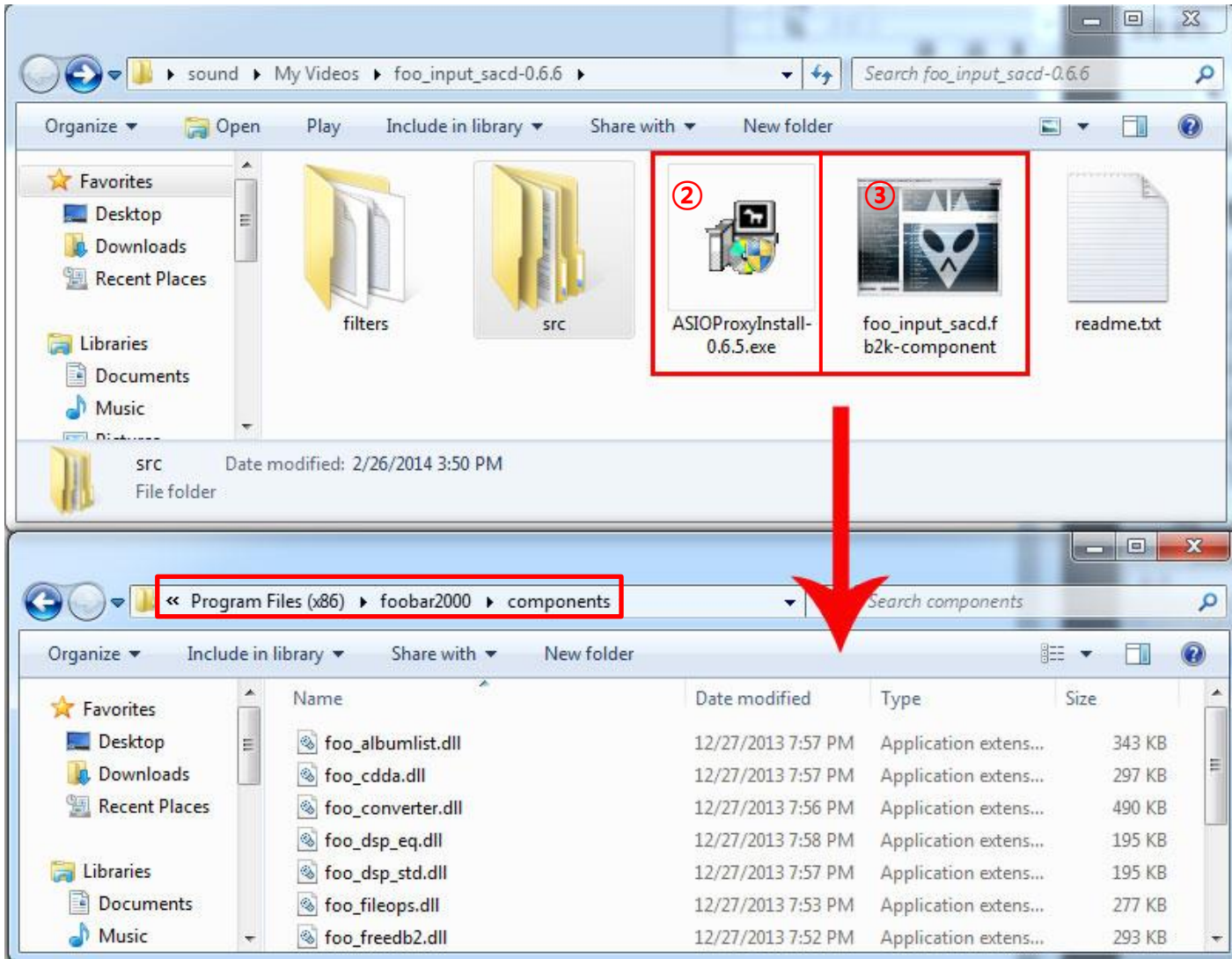
Download link at: http://www.foobar2000.org/components/view/foo_out_asio



3. Download and install SACD decoder

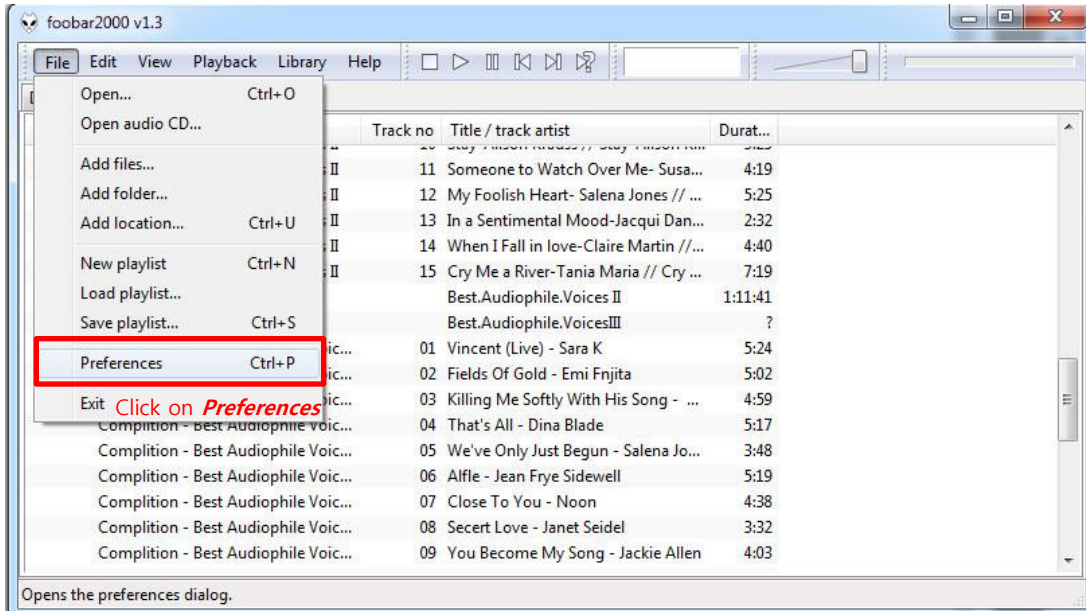
Download link at: http://sourceforge.net/projects/sacddecoder/files/foo_input_sacd/

- ① Extract file from the zip file.
- ② Double-Click **ASIOProxyInstall-0.6.5.exe** and install the file.
- ③ Copy this file to the FooBar2000 Components folder (you can drag the file or **Ctrl+C** ⇒ **Ctrl+V**)

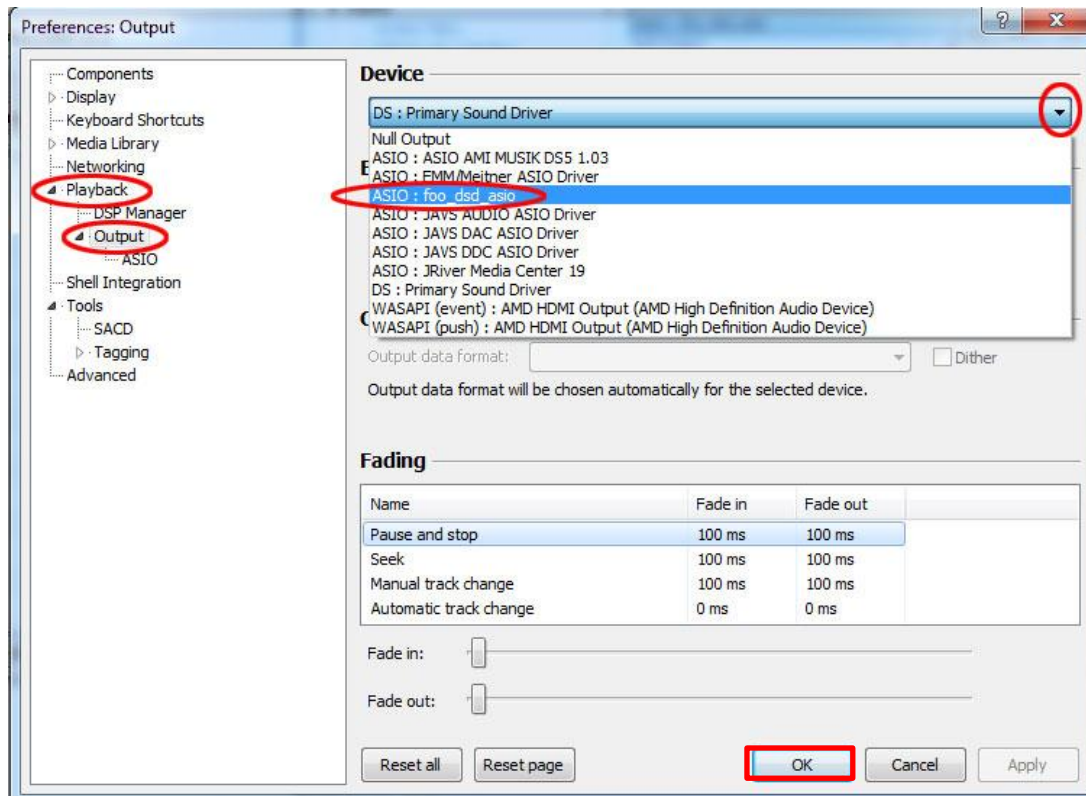


4. Setting up Foobar2000 for DSD playback

1) Go to Foobar2000 **File** menu > Preferences (**Ctrl + P**)

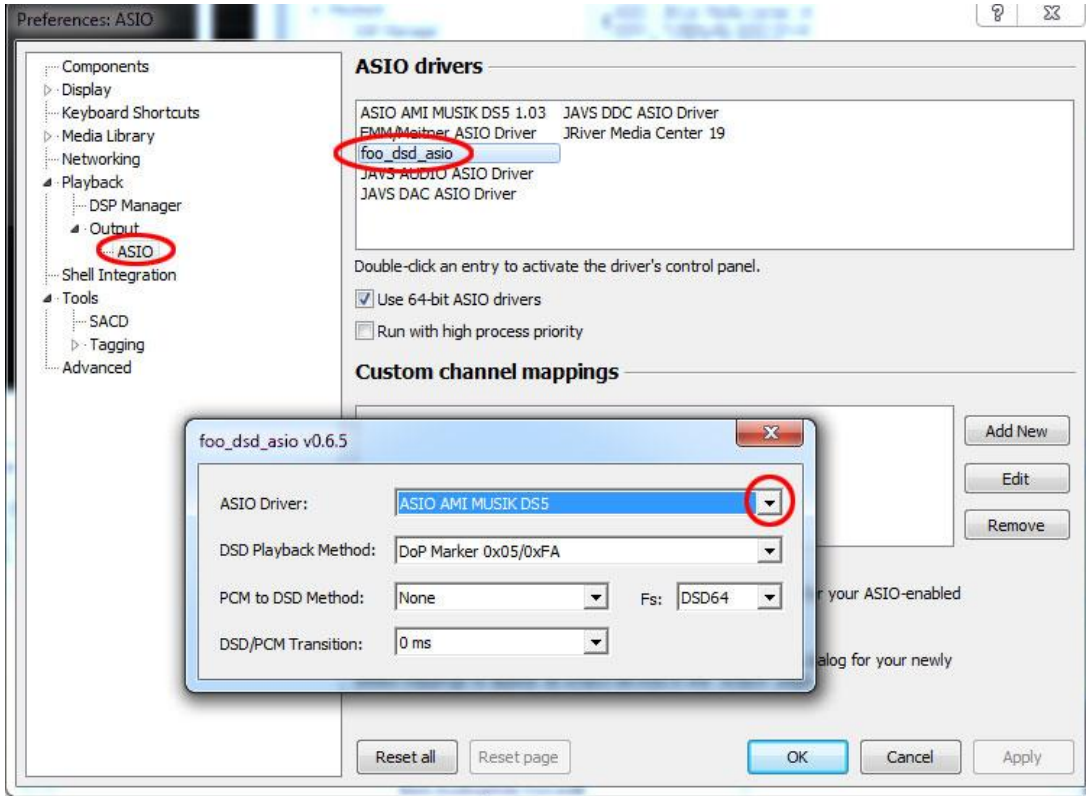


2) Go to **Playback** > **Output** > Select **ASIO : foo_dsd_asio** > then click **OK**

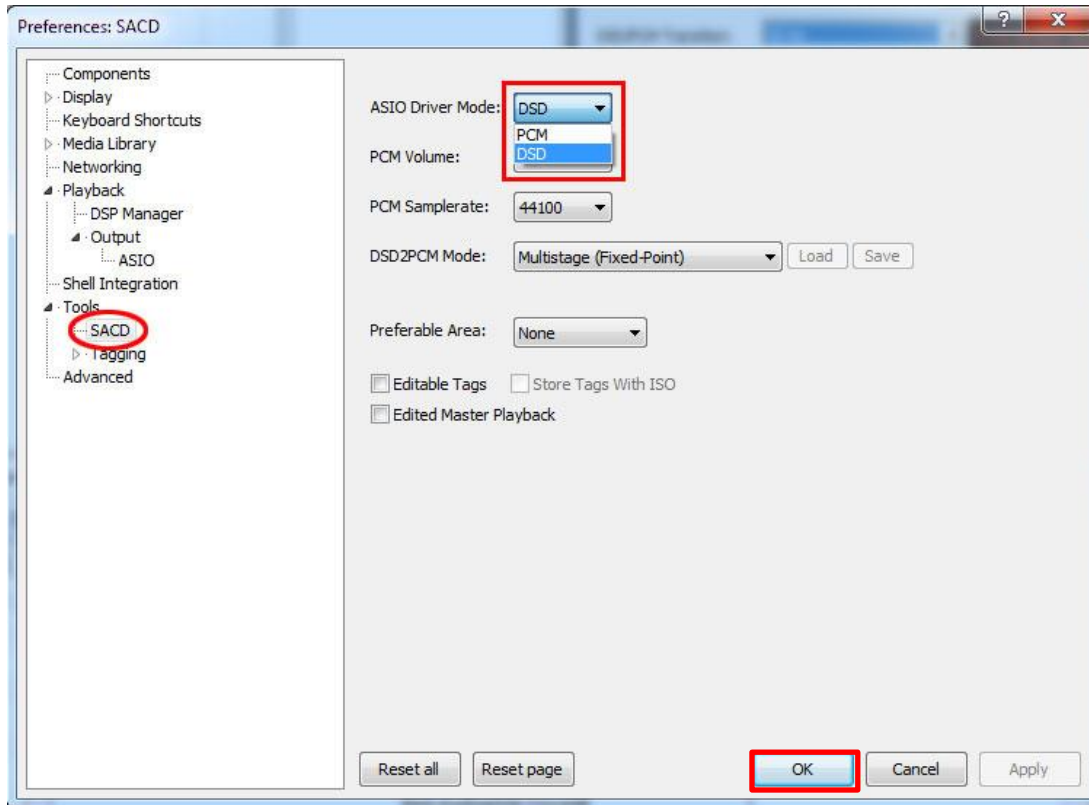


3) After selecting **Playback > Output > ASIO** > and selecting **foo_dsd_asio** (double click), a pop-up screen will pop up as below screen shot. Set as per the below screen shot.

✘ For foo-dsd-asio v0.6.5 version, set DSD/PCM Transition to 10ms when playing back DSD for the first time. You can change this to your preference after the first us.



4) Go to **Tools** > **SACD** and change the **ASIO Driver Mode** from **PCM** to **DSD** > and click on **OK**



The setting is now ready to play DSD.

You can download free DSD samples from the following link:

- <http://www.2l.no/hires/index.html>
- Username: 2L
- Password: 2L